

JULY 2011

LUXURY HOME

quarterly



CARLOS MARTIN ARCHITECTS
DESIGNS FOR FLORIDIAN ESTATE LIVING

+ A PEEK INSIDE *several dynamic
and innovative American lake homes*



*DeForest Architects used
clients' background as
inspiration for the design
of their lake home*

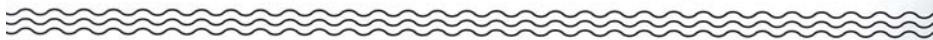
TEXT BY DAVID HUDNALL

PHOTOS BY BEN BENSCHNEIDER





THE NEST





DEFOREST ARCHITECTS PROUDLY AND actively advocates a playful approach to architecture. “Remember playing with blocks, forgetting to ‘stay between the lines,’ and getting caught up in the moment of ‘What if?,” reads the Seattle-based firm’s website. “We embrace that inventive spirit.”

But the firm’s approach is far from simplistic; in fact, DeForest Architects’ design process is highly detailed and comprehensive, particularly when it comes to client involvement. Just ask Paul and Penny Fredlund, an empty-nest couple (“We call them an anything-but-empty-nest couple,” principal John DeForest says) for whom the firm designed a contemporary home on Lake

Washington affectionately known as The Nest. “We led them through a series of homework assignments,” DeForest says. “They completed a ‘spatial history’ of places they’ve lived, writing out all the things that were memorable about those places. We also started out showing them some simple block models—three-dimensional designs that they were able to grasp very quickly and which allowed for a holistic look early on during the decision-making process.”

The Fredlunds are an active, outgoing couple who had always dreamed of living on a lake. In purchasing a property on Lake Washington, they were transitioning from a traditional historical house into something more modern. “They

wanted a fresh lease on life,” DeForest says. “They wanted a home that was cozy for two but comfortable for a crowd, and they didn’t want to feel like they were rattling around an empty house. They wanted to come home and feel like they were going on vacation.” Tall orders. But by comprehending precisely what living spaces were amenable to their lifestyle and then playing around within those ideas, DeForest was able to create a design that very accurately matched the Fredlunds’ desires.

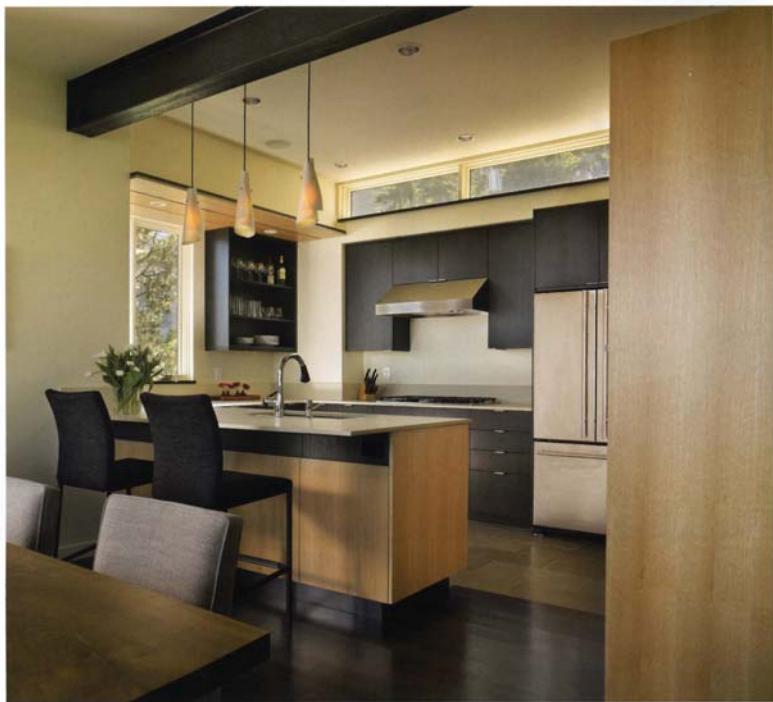
So what does it look like? Very simply, it is an urban home with a strong sense of both nature and seclusion. A green rooftop garden nestled into the hillside offers a relaxing escape from the



Top Design Elements of The Nest

1. **The hidden bedroom door**, a sliding art panel designed by DeForest and custom fabricated by Joseph McKinstry Construction (jmcc.com), hides the master suite from guests.
2. **Slide-fold doors to the outside**—custom-made by HH Windows & Doors (hhwindows.com)—open the living spaces to sweeping views.
3. **Custom cabinetry**, designed by DeForest from white oak, was fabricated by Mark Mayer Modern (markmayermodern.com) and has inset treasure boxes for special collections.
4. **The ceiling** is made from maple plywood and was custom fabricated by Joseph McKinstry Construction (jmcc.com).
5. **The window layout** was designed to balance views and privacy, and glass was provided by Sierra Pacific Windows (sierrapacificwindows.com).





The Nest

A lake home with an emphasis on living in tune with the elements and accommodating an easy, active lifestyle. The Nest is the product of an intensive design process DeForest Architects conducted closely with the clients. The home reflects the wishes, aesthetics, and lifestyles of an empty-nest couple. The 2,500-square-foot house features an additional 1,000 square feet of deck space off the dining room and master bedroom. And with three bedrooms and three and a half bathrooms, it is both a cozy space for two and an accommodating venue for entertaining guests.





indoors. The patio table, designed by DeForest, located on the deck outside the master bedroom, is literally living, filled with sedums. The upstairs deck itself is largely shielded from the road and is "spectacular in the late-afternoon, pre-sunset light, its rich color illuminating the lake, mountains, Bellevue, and Mercer Island," DeForest says.

Inside, the home's modern look shines with clean lines, flexible spaces, golden walls, and a minimalist touch. This aesthetic artfully works off of the Fredlunds' eclectic collections as well as the Caesarstone counters and white-oak cabinets.

In the living room, large windows overlook the lake, and even one side of the kitchen is opened up to the view.

In Paul's spatial history, he wrote about his experience living on a houseboat and how he loved the feeling of being able to step out and enjoy the pleasures of the sky, winds, and sunsets on the deck of a ship. This led DeForest to create a main living space that floats above the ground and is accessible via an entry bridgeway that recalls a gangplank. Paul's office area upstairs is a crow's nest with views of the lake and Mount Rainier.

During the information-gathering process, DeForest noticed that the Fredlunds tended to organize their belongings in baskets that would serve various activities: birdwatching, hikes, etc. As a result, the firm organized storage on the main floor into a series of cabinets supporting these adventures—special niches they have termed treasure boxes. Flourishes like these—along with the bridge-like entry walk and low-maintenance materials—help achieve the "vacation every day" objective. "Ultimately, the home is at once a retreat, a gathering place, and a lookout," DeForest says. ■