

A THING OF BEAUTY

ARCHITECTS: LANE WILLIAMS AND JILL LEWIS OF LANE WILLIAMS ARCHITECTS

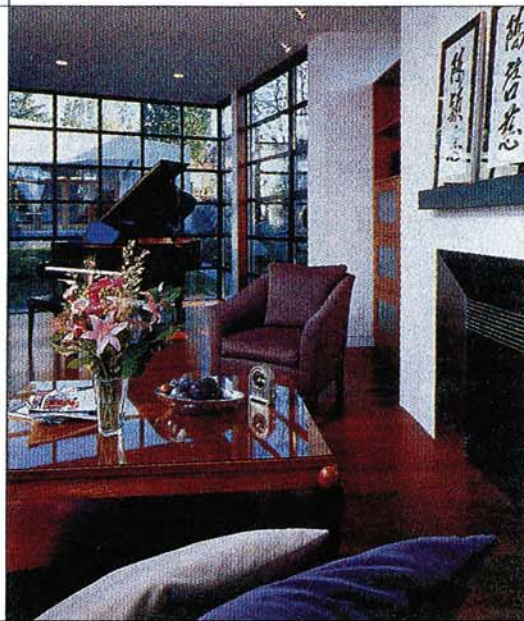
BUILDER: JOSEPH MCKINSTRY CONSTRUCTION

CONSTRUCTION COST: \$915,000

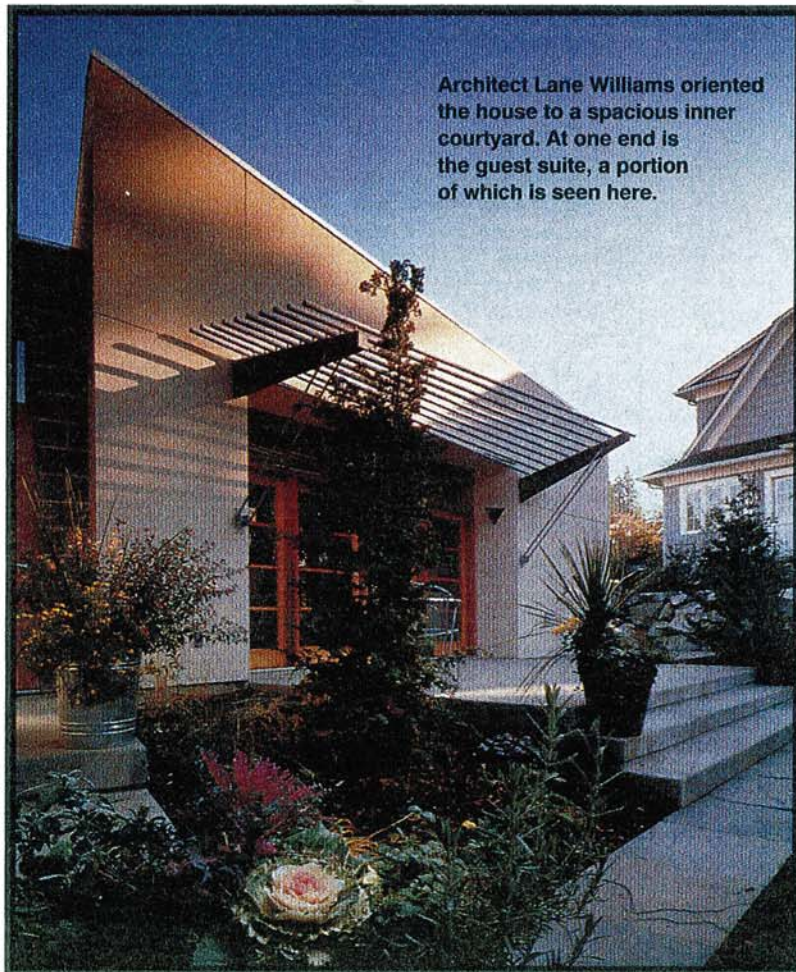
■ YARROW POINT

THE INTENT:

In designing this 5,000 square-foot residence, its owners, a young family, “focused on thinking seriously about living with the house and how it needs to function through time and on every level,” explains Lane Williams. “The house was designed to last a lifetime.” In practice that meant orienting the C-shaped home not to the Lake Washington view but inward to a central courtyard where the very private family can relax and share meals. At one end of the courtyard is the two-story house; the second-floor children’s area is designed for bedroom sharing while they’re young, then there’s a full bedroom suite in the basement, possibly for future teen-age use. Across the courtyard is a one-story guest residence used now by visiting family members and perhaps in the future by the owners “should they no longer be able to climb stairs. Connecting the two spaces are the garage and spacious media room. The husband, in particular, had a clear concept of what the house should feel like: “contemporary, clean, open and it should be a thing of beauty that’s attractive from all angles. And we wanted a flowing space that would work for us.” Williams punched up the main floor’s open floor plan by varying floor heights and adding numerous angles and alcoves. Materials are a combination of industrial and luxe; warm mahogany built-in living room cabinetry juxtaposes with commercial-grade aluminum window units. Exterior materials include concrete masonry walls and metal roofing. The end result, said one judge was an wonderfully crafted, elegantly detailed contemporary house.



A view of the living room illustrates the geometric shapes and high-quality touches, such as the built-in cabinetry, found throughout the house. The irregularly shaped pop-out of metal-framed window walls was custom designed for the piano.



Architect Lane Williams oriented the house to a spacious inner courtyard. At one end is the guest suite, a portion of which is seen here.